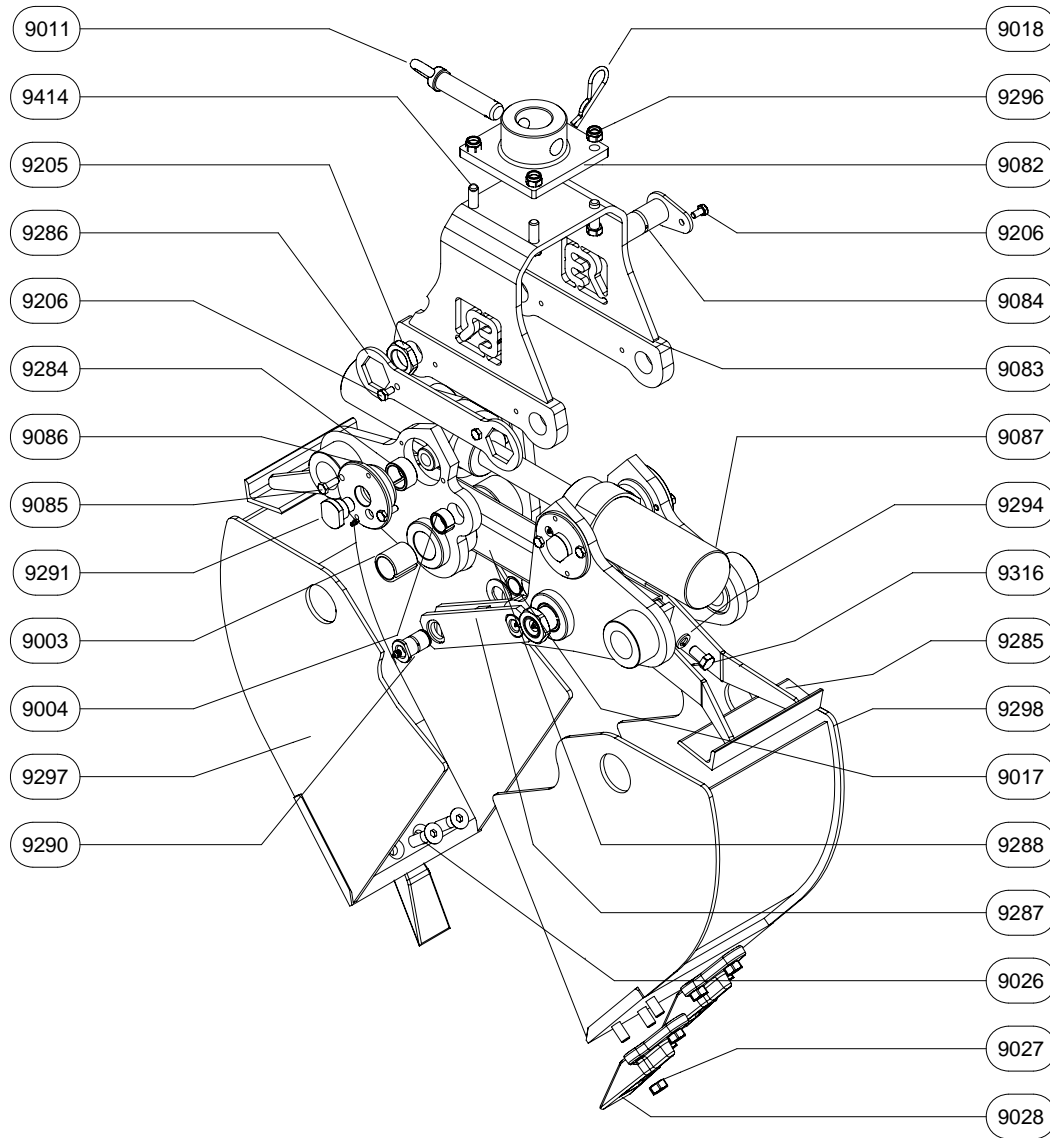




## HBD Grab



## SPARE PARTS

| PART N°  | QUANTITY  | SPECIFICATION   |
|----------|-----------|-----------------|
| HBD-9003 | 4         | SPLIT BUSH      |
| HBD-9004 | 2         | SPLIT BUSH      |
| HBD-9011 | 1         | CONECTOR PIN    |
| HBD-9017 | 2         | CIRCLIP         |
| HBD-9018 | 1         | HAIRPIN SPRING  |
| HBD-9026 | zie tabel | BOLT            |
| HBD-9027 | zie tabel | NUT             |
| HBD-9028 | zie tabel | TEETH           |
| HBD-9082 | 1         | CONNECTOR PLATE |
| HBD-9083 | 1         | SADDLE PLATE    |
| HBD-9084 | 2         | SHAFT           |
| HBD-9085 | 8         | BOLT            |
| HBD-9086 | 4         | FLANGED BUSH    |
| HBD-9087 | 1         | CYLINDER        |
| HBD-9205 | 2         | NUT             |
| HBD-9206 | 4         | BOLT            |
| HBD-9207 | 8         | SPRING WASHER   |
| HBD-9284 | 4         | SPLIT BUSH      |
| HBD-9285 | 2         | EJECTOR         |
| HBD-9286 | 1         | LOCKING SPANNER |
| HBD-9287 | 1         | STADY LINK      |
| HBD-9288 | 1         | BASE OF EJECTOR |
| HBD-9290 | 2         | PIN             |
| HBD-9291 | 4         | SECURING BOLT   |
| HBD-9294 | 4         | SPRING WASHER   |
| HBD-9296 | 4         | NUT             |
| HBD-9297 | 1         | SIDE PANEL A    |
| HBD-9298 | 1         | SIDE PANEL B    |
| HBD-9316 | 4         | BOLT            |
| HBD-9414 | 4         | BOLT            |

| Grab type            | HBD 30 | HBD 40 | HBD 50 | HBD 60 |
|----------------------|--------|--------|--------|--------|
| Number HBD 9026/9027 | 9      | 9      | 15     | 15     |
| Number HBD 9028      | 3      | 3      | 5      | 5      |